

# Scrutiny Briefing on Transitions

---

May 2024

## What is the Transition Programme?

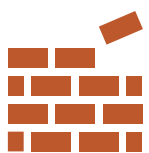
---



The vision is for a new service, the Haringey Integrated Transition Service. They will undertake a cross directorate, multi-agency approach to provide a seamless service to our vulnerable young people in Haringey.



This service will support and prepare young people (14-25) already known to existing teams within children's services and young people who present as vulnerable as they transition into adulthood.



In order to provide a unified approach, this service will have co-dependencies in housing, health, education, employment, and community assets.

# What is the Transitions Programme?

The new Haringey Integrated Transition Service, which will support vulnerable young people (14-25) transition to adulthood. This builds on Haringey's 'Preparation for Adulthood Strategy'.

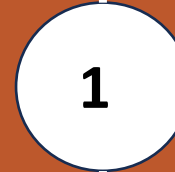
The cohort of children and young adults identified to be supported by this programme are those:

- with Special Education Needs and Disability (SEND),
- with Disabilities
- with Learning difficulties, Neurodivergent and Mental Health support needs (CAMHS)
- Children in care and care leavers
- *Vulnerable young adults who may not meet statutory thresholds.*

## PROGRAMME TIMELINES



Programme Initiated –  
March 2024



# Statutory Duties

---



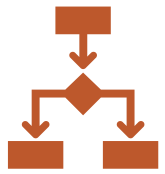
Under the Care Act 2014, Haringey has a statutory duty to assess eligible young people (and their carers) and young carers as they approach the age of 18. If their needs require it, Haringey must support their transition in Adults Social Care. This is detailed in Part 1, Sections 58-66, *'Transition for children to adult care and support, etc.'*



Likewise, new proposed legislation that is progressing through Parliament would also require local authorities to better prepare vulnerable young people with supported housing as they transition into adulthood.

## Current Transitions : Strengths

---



There are a broad range of services for adults in the community that do not meet the Mental Health or ASC threshold for services.



There are pathways that redirects young people to community services.



Referrals can be made by a range of professionals.

## Current Transitions : Areas of Development

---



Lack of evidence of Preparation for Adulthood in EHCPs



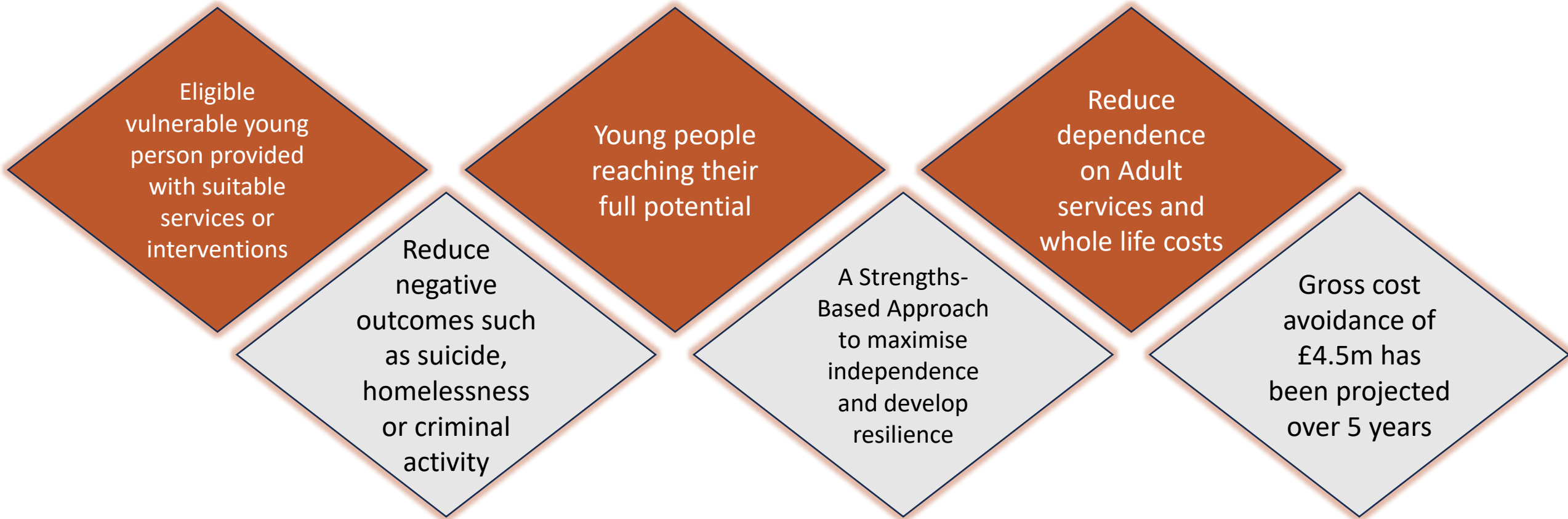
Provision and process for transitions in education



Community housing redesigns

## How will the Transitions Programme achieve Improvement?

---



# Financial Cost Pressures

There has been an increasing demand for high-cost residential and supported living services in both Children and Adult services. The greatest proportion of young people who transitioned into Adult Social Care from 2019- 2023 (July) have a primary need of Learning Disability. Below is a table showing that the cohort of 170 young adults aged 18-24 who have transitioned into Adults Services have a current cost of £7.68m per annum

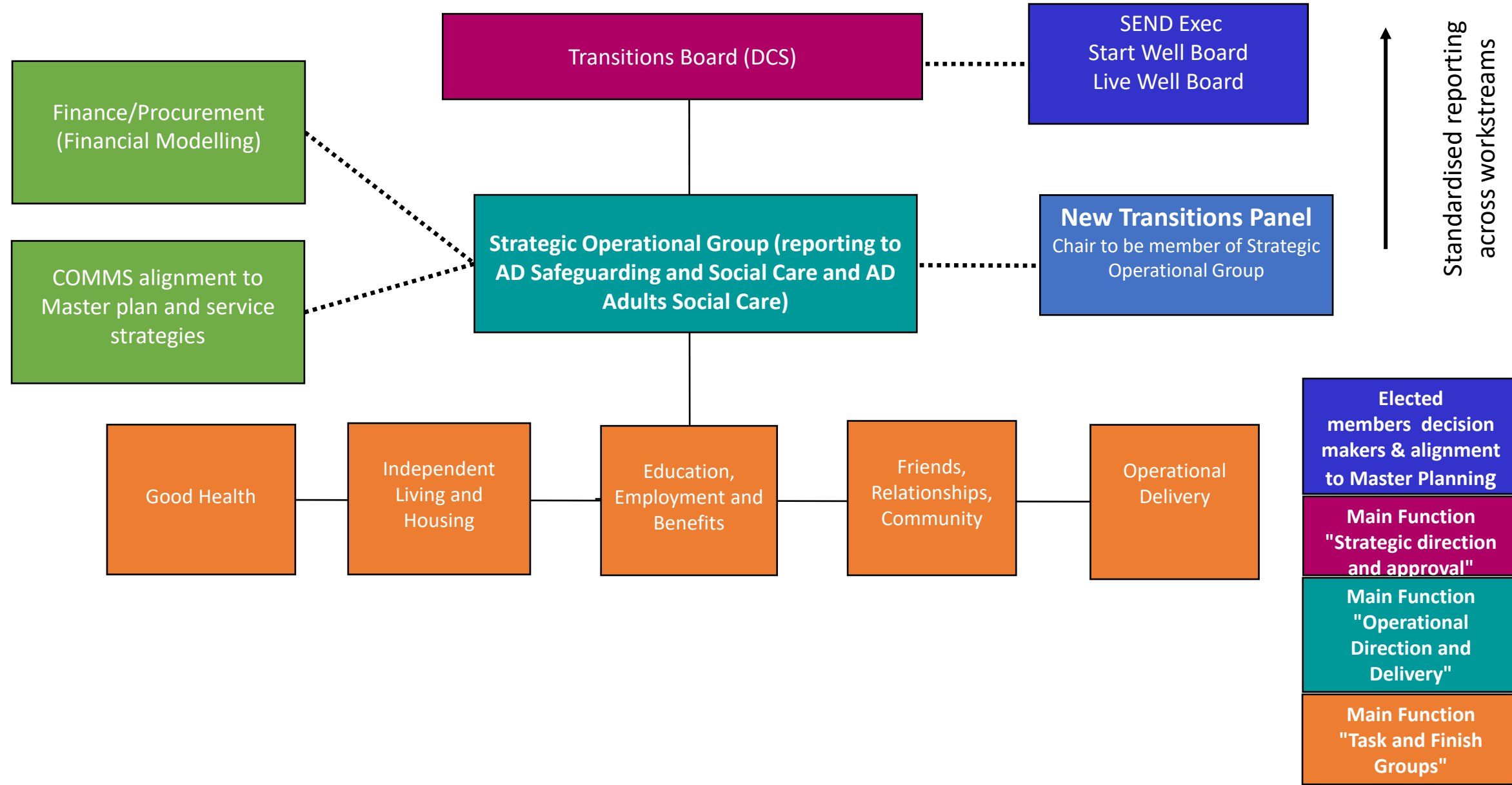
- *Table 2 from Business Case: Current Financial Pressures of Primary Needs.*

Primary Need	Current Cost
	£000's
Learning Disability Support	6,230
Mental Health Support	562
Physical Support	868
Sensory Support	7
Social Support	12
<b>Grand Total</b>	<b>7,679</b>

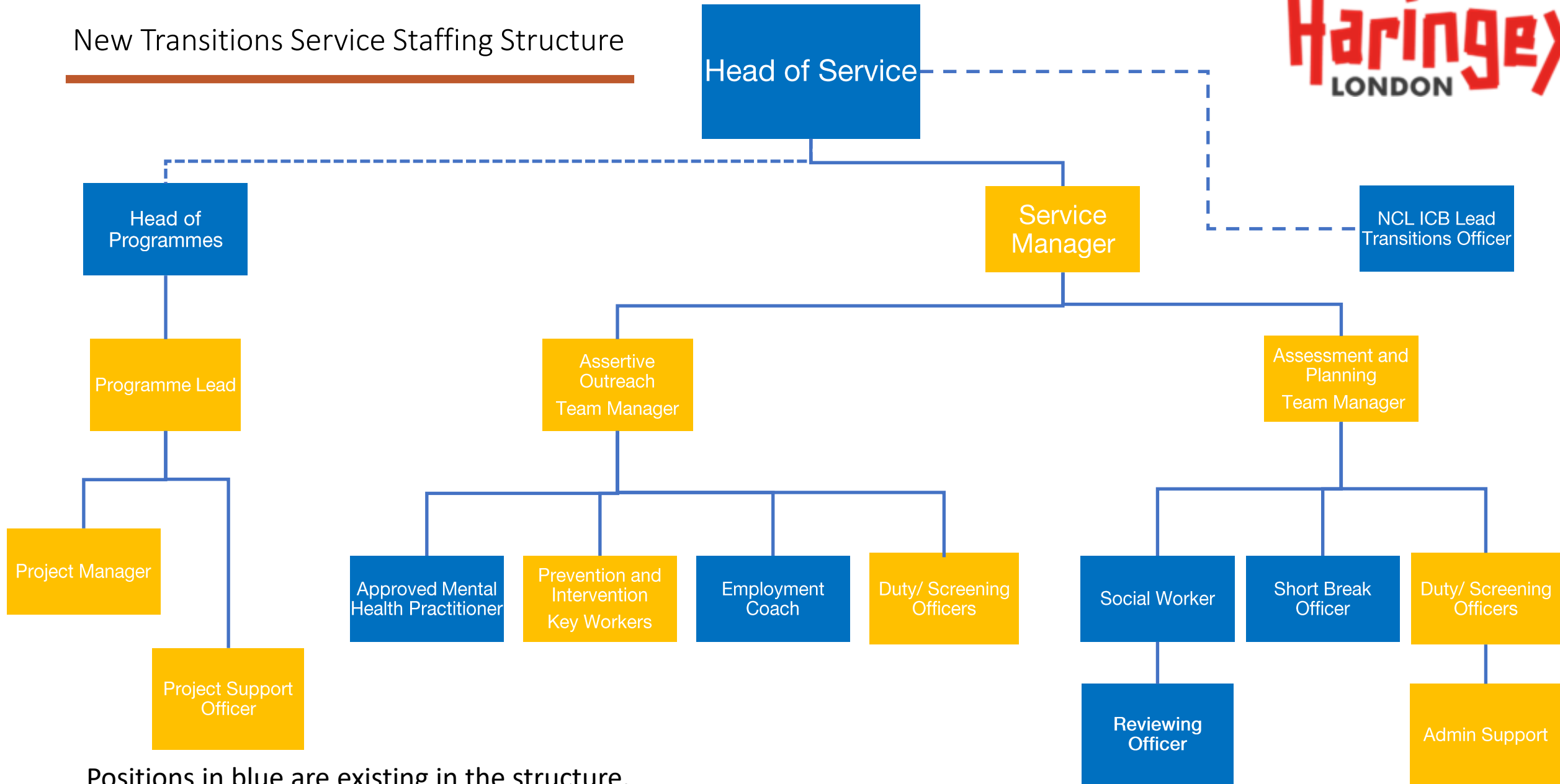
- The current trajectory indicates from 2024/25 to 2028/29 an additional 226 young adults will transition into Adults with current cost of over £13m based on their current services over a 5 - year period.



# Transitions Programme Governance



# New Transitions Service Staffing Structure



Positions in blue are existing in the structure.  
Positions in yellow are new in the structure.

Any Questions?

---